

BASKETBALL GOALS



2 YEAR LIMITED WARRANTY

No. 00245-500 Ultra-Flex® Goal

Specify this goal when you want a positive lock mechanism that releases with a 180 lb. static load. Tube-tie net attachment system improves safety by eliminating conventional formed wire ties.



1 YEAR LIMITED WARRANTY

No. 00233-000 Powr-Flex® Goal

Meets all basketball specifications for movable rims. Protects players and equipment during slam-dunk maneuvers. Concealed shock absorber mechanism. High-quality powder-coated finish, complete with goal-mounting hardware and nylon anti-whip net.



5 YEAR LIMITED WARRANTY

No. 00254-500 Torq-Flex® 180° Adjustable Goal

This state-of-the-art goal flexes around a 180 degree arc at the front of the rim, at the sides and anywhere in-between. The accuracy and simplicity of this adjustable goal make it superior in design and performance for the highest levels of both NCAA and FIBA competition requirements. The Torq-Flex® 180 Adjustable goal is player tested tough by the NBDL. Goal is maintenance-free and will provide years of slam dunks.

This goal incorporates dual precision hardened high-tensile alloy steel torsion rods, allowing the goal to pivot in all directions while providing adjustable elasticity and ball rebound characteristics. Tube-tie net attachment system improves player safety by eliminating conventional formed wire ties. Furnished in a durable powder-coated finish complete with a high-quality anti-whip net and mounting hardware. Recommended for the most demanding competition usage.



5 YEAR LIMITED WARRANTY

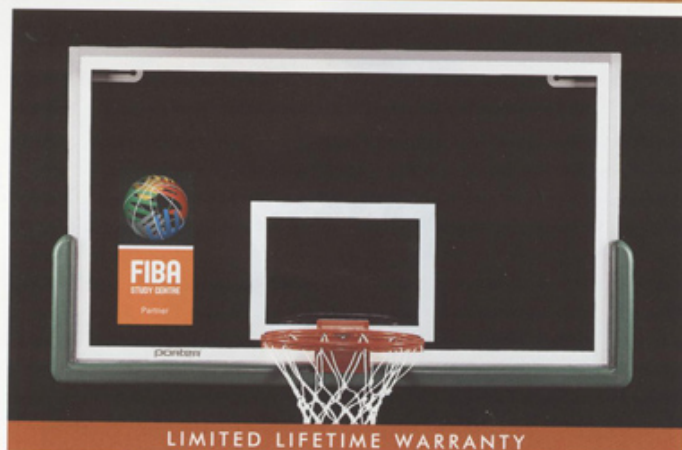
No. 00252-500 Torq-Flex® Goal

This maintenance-free movable flex goal is an excellent choice for main court competition! The Torq-Flex® is built to withstand the rigors of pro-level slam dunks. In fact, even after 45,000 dunks the goal did not lose any of its original rebound characteristics.

The unique, precision hardened high-tensile alloy steel torsion rod pivot design provides adjustable elasticity and ball rebound characteristics. Tube-tie net attachment system improves player safety by eliminating conventional formed wire ties. This rugged goal will provide you with years of maintenance-free usage on any indoor court. Furnished in a durable powder-coated finish complete with a high-quality anti-whip net and mounting hardware.

The Torq-Flex® 180° goal meets the NCAA Division I Requirement The Torq-Flex® 180 adjustable goal is easily calibrated to comply with the latest NCAA and FIBA requirement for proper rebound elasticity (NCAA 2005 rules supplement, pg. 24, paragraph 9). Official calibration is easily certified with Porter's Fair-Court® rim testing system. For additional information or assistance contact Porter or your local representative.

BASKETBALL BACKBOARDS



No. 00208-000 Center-Strut® Mount Rectangular Glass Backboard

The ultimate backboard for use on all Center-Strut® support structures. Official size, 72" x 42" x 1/2", rectangular fully tempered plate glass backboard is designed for use with three point support attachments as featured on all Porter portables, or No. 900 Center-Strut® overhead supported units. The heavy steel goal mounting plate on the backside of the unitized frame is equipped with independent attachment bolts so that the four goal mounting bolts may be completely removed if necessary without affecting the support or plumb of the backboard. Front and sides of backboard are furnished in a durable brushed aluminum extrusion. Official markings are "fired" into the glass. Specify Safety Padding Found on Page 15.



Center-Strut® Direct Mounting Feature



No. 00208-OL1 Backboard with Perimeter LED Light System

Official glass backboard (00208-000) with factory installed perimeter lights mounted to the backside of the backboard. Complies with the latest NBA, NCAA and FIBA recommendations. LED system is neatly contained within a custom black PVC extrusion and mounted directly inside the perimeter backboard markings to provide a clean, uncluttered appearance to the system. Provided with an adapter cable (30') to connect to a 24 VAC operating power source from main scoreboard game time display.

*One Year Warranty on LED Light System

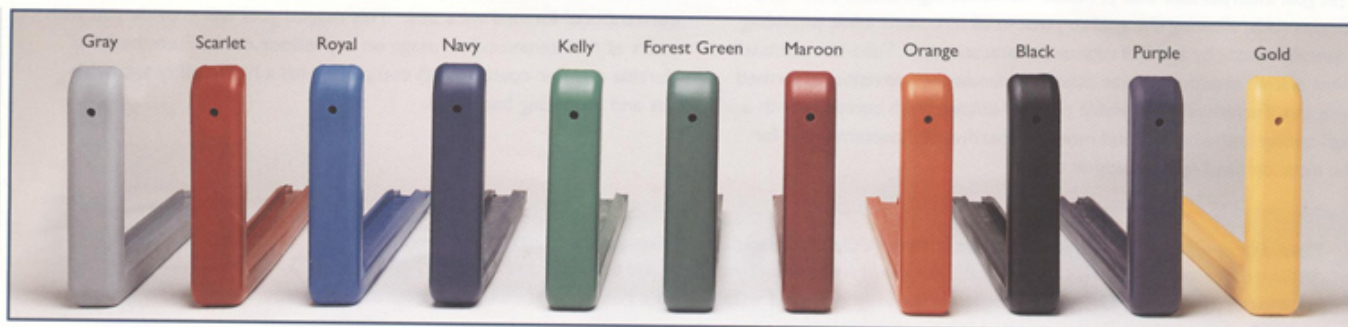
No. 00204-000 Pro Strut® Rectangular Glass Backboard

Official size 72" x 42" x 1/2" rectangular fully tempered plate glass backboard furnished with a unitized steel frame incorporating a pro-style Center-Strut®. Goal mounting support and four corner attachment plates allow for installation on wall mount units, double drop overhead supported units or as a replacement backboard on old style support systems. Front and sides are furnished in a durable brushed aluminum extrusion. Official markings are "fired" into the glass.



Pro Strut® Goal Mounting Feature

All rectangular boards are shown with optional Porter Backboard Safety Padding.



BASKETBALL BACKBOARDS



No. 00216-000 Medallion™ Rectangular Fiberglass Backboard

Official size 72" x 42" x 2" backboard is molded from high-tensile strength SMC fiberglass and designed with the same Center-Strut® direct goal-mount feature as Porter's glass backboards. Mold-in threaded (3/8-16) inserts on fan backboard mounting centers are standard for ease of mounting on any standard support structure. Strategically placed 2" deep reinforcing ribs and heavy perimeter flange provides excellent rebound qualities. Plated steel reinforcing plate in center of goal mount area provides unequalled strength and durability. Two additional holes are provided for independent mounting of backboard to a Center-Strut® support system for ease of installation and goal replacement.

Specify No. 00227 Adhesive or No. 00326 Pro-Pad® bolt-on backboard safety padding.

*** Lifetime Warranty when installed indoors on Porter's Center-Strut® series backstops.



Patent No. 5,207,419

No. 00234-300 Fan Aluminum Backboard

Official size 54" x 39" die cast aluminum with continuous reinforcing ribs on backside make this our most durable fan-shaped backboard. Perimeter flange and ribs at critical goal mounting area are a full 1-1/2" thick for maximum strength. White powder-coat finish with official orange perimeter and target markings.



Back of No. 00234-300 Reinforced Rib Structure
Patent No. 5,207,419

No. 00228-300 Rectangular Wood Backboard

Official size 72" x 42" x 1-9/16" thermally fused melamine phenolic resin surfaces on both sides of a solid, 55-lb density industrial grade particle board. Perimeter and target markings are an integral part of the surface for durability and appearance.

Specify No. 00229-000 Adhesive Safety Padding-Gray or Specify No. 00324-072 Bolt-on Safety Padding-Gray.

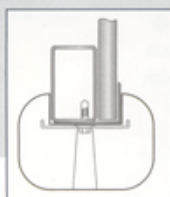
** Lifetime Warranty when installed on Porter's Center-Strut® series backstops.

All rectangular boards are shown with optional Porter Backboard Safety Padding.

No. 326 Pro Pad® Bolt-on Backboard Padding

This extremely durable pad is manufactured with a tough molded urethane skin that is painted in the mold with a color matched urethane paint to provide the exterior with uniform col-

ored appearance. A steel insert provides strength at all of the mounting locations and stiffness along the bottom of the backboard. The integral steel attachment channels are secured to the backboard with special



self-drilling, self-tapping attachment screws for semi-permanent installation. Meets all competition requirements of the NBA, NCAA, NFHS and International requirements of FIBA. Choose from a wide selection of colors at left.

No. 00324-072 Gray Safety Padding for Wood Backboards



No. 00227-000 Gray Safety Padding for 2" Thick Backboards

No. 00229-000 Gray Safety Padding for 1-9/16" Thick Backboards

